



Derma⁺

info@dermat.be

www.dermat.be



Accessories

For operating
tables



we care.



In this brochure you will find the following:

- Accessories for attachment at EU side rail (25 x 10 mm)
- Accessories especially for medifa operating tables

General accessories	4	
Head positioning	14	
Arm positioning	18	
Leg positioning	22	
Neurosurgery	28	
Orthopaedics and traumatology	30	
Positioning aids	38	
Accessories for medifa 7000	42	
Accessories for medifa 5000 and 6000	50	
Accessories for medifa 5000 BASIC	58	
Accessory trolley	62	

General accessories



Rotatable clamp

Art.-no. 61511

- For fixation of accessories with round rod (18 mm)
- Material: Stainless steel



Rotatable clamp with quick lock and release lever

Art.-no. 61512

- For fixation of accessories with round rod (18 mm)
- Material: Stainless steel, Aluminium



Clamp for square rod (25 x 10 mm)

Art.-no. 61551

- Material: Aluminium



Clamp for square rod (20 x 20 mm)

Art.-no. 61552

- Material: Aluminium



Clamp for round rod (18 mm)

Art.-no. 61553

- Material: Aluminium



Clamp with quick lock and release lever for round rod (18 mm)

Art.-no. 61554

- Material: Stainless steel, Aluminium

General accessories



Anaesthesia screen

Art.-no. 61750

- Extendible to both sides
- Incl. clamp
- Material: Stainless steel



Arm restraint cuff

Art.-no. 61755

- For attachment at anaesthesia screen
- Suitable for: 61750
- Material: Stainless steel



Flexible anaesthesia screen

Art.-no. 61751

- Bendable
- Individually adjustable
- Incl. clamp
- L: 2,000 mm
- Material: Stainless steel



Tube support

Art.-no. 61752

- For fixation of breathing tube
- Bendable support is infinitely variable
- Adjustable in height
- Incl. clamp
- Material: Stainless steel



Infusion holder

Art.-no. 61800

- Extendible
- Four hooks
- Incl. clamp
- Material: Stainless steel



Rotatable infusion holder

Art.-no. 61805

- Extendible
- Rotatable
- Four hooks
- Incl. rotatable clamp
- Material: Stainless steel

General accessories



Mayo table

Art.-no. 61410

- Incl. clamp
- Adjustable in height, rotatable and inclinable
- L x W: 450 x 350 mm
- Material: Stainless steel



Side rail extension

Art.-no. 61560

- Incl. clamp
- Extends side rail up to 320 mm
- For attachment of accessories at side rail (EU)
- Material: Stainless steel



Sliding handles

Art.-no. 61571

- For easy and comfortable movement of operating table
- Incl. clamp
- Material: Stainless steel
- Pair



Side support

Art.-no. 61341

- Incl. clamp
- Upholstery: PUR, L x W each 220 x 110 mm, electrically conductive
- Material: Stainless steel
- Pair



Shoulder support

Art.-no. 61351

- Incl. clamp
- Adjustable in height and extendible
- Upholstery: PUR, L x W each 220 x 110 mm, electrically conductive
- Material: Stainless steel
- Pair



Double side support

Art.-no. 61362

- Incl. clamp
- Support of pelvis section
- Adjustable in height and extendible
- Upholstery: PUR, Ø 100 mm, electrically conductive
- Material: Stainless steel



Holder for body supports

Art.-no. 61361

- Adjustable in height, extendible and swivelling (360°)
- Positioning of body supports by means of ball joint
- Material: Stainless steel



Joint arm for body supports

Art.-no. 61365

- Flexible positioning of body supports by means of three joints
- Quick lock and release of joint arm by means of central screw
- Material: Stainless steel



Body support for pubis, sacrum and sternum

Art.-no. 61361_1

- Upholstery: PUR, Ø 100 mm, electrically conductive
- Suitable for: 61361, 61365 and 81361
- Material: Stainless steel



Body support for side and shoulder

Art.-no. 61361_2

- To support side and shoulder
- Upholstery: PUR, L x W 220 x 110 mm, electrically conductive
- Suitable for: 61361, 61365 and 81361
- Material: Stainless steel



Body support for back and buttocks

Art.-no. 61361_3

- Upholstery: PUR, L x W 220 x 110 mm, electrically conductive
- Suitable for: 61361, 61365 and 81361
- Material: Stainless steel



Supporting roll

Art.-no. 61361_4

- For lateral positioning of patient
- Upholstery: PUR, L x Ø 190 x 100 mm, electrically conductive
- Suitable for: 61361, 61365 and 81361
- Material: Stainless steel



Instrument disposal round form

Art.-no. 91611

- Incl. clamp
- Swivelling
- Ø 280 mm
- Material: Stainless steel



Instrument disposal squared form

Art.-no. 91612

- Incl. clamp
- Swivelling
- L x W x H: 325 x 265 x 65 mm
- Material: Stainless steel



Bowl with drainage and tube

Art.-no. 91613

- Incl. clamp
- Swivelling
- Ø 320 mm
- Material (Bowl): Stainless steel



Bucket

Art.-no. 91608

- With lid and tube-inlet
- Volume: 12 litre
- Material: Stainless steel
- Suitable for: 91613



Hand switch support

Art.-no. 61575

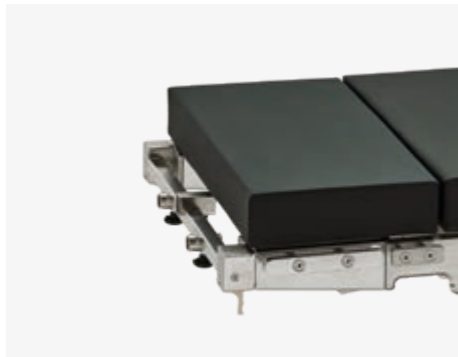
- To place hand switch at lateral or head-sided side rail
- Tilttable
- Material: Stainless steel



Universal adapter for medifa 5000 and 6000

Art.-no. 61100

- For attachment of a variety of head positioning and neurosurgical accessories
- Material: Stainless steel



Universal adapter for medifa 7000

Art.-no. 71100

- For attachment of a variety of head positioning and neurosurgical accessories
- Material: Stainless steel



Horseshoe shaped head rest with cut-out

Art.-no. 61114_1

- For positioning head in prone or supine position
- Oval form
- Tiltable and rotatable by means of ball joint
- Adjustable in height
- Upholstery: PUR, electrically conductive
- Material: Stainless steel
- Attachment at 61100, 61385, 61390, 71100 or 71390



Horseshoe shaped head rest two-parted

Art.-no. 61114_3

- For positioning head in prone or supine position
- Incl. detachable upholsteries and fixture strap
- Extendible in width
- Rotatable and tiltable by means of ball joint
- Upholstery: Viscoelastic foam, electrically conductive
- Material: Stainless steel
- Attachment at 61100, 61385, 61390, 71100 or 71390



Head support

Art.-no. 61395

- For comfortable and safe positioning of patient's head during shoulder surgeries
- Attachment at tripartite back rest or universal adapter
- Extendible
- Incl. upholstery



Joint arm

Art.-no. 61117

- For attachment of head positioning accessories
- Flexible positioning of body supports by means of three joints
- Quick lock and release of joint arm by means of central screw
- Attachment at universal adapter 61100 or 71100
- Material: Stainless steel

Head positioning



Head support for joint arm

Art.-no. 61117_2

- For stable positioning and fixation of patient's head
- Incl. upholsteries and fixation strap
- Upholstery: Viscoelastic foam, electrically conductive
- Attachment at 61117



Horseshoe shaped head rest with cut-out for joint arm

Art.-no. 61117_3

- For positioning head in prone or supine position
- Oval form
- With cut-out
- Upholstery: PUR, electrically conductive
- Attachment at 61117



Horseshoe shaped head rest two-parted for joint arm

Art.-no. 61117_5

- Incl. detachable upholsteries and fixture strap
- For positioning head in prone or supine position
- Extendible in width
- Upholstery: Viscoelastic foam, electrically conductive
- Attachment at 61117



Wrist support ring for head positioning accessories

Art.-no. 61113

- With connecting piece for horseshoe shaped head rest
- Material: Stainless steel
- Suitable for: 61114_1, 61114_3, 61117_3, 61117_4, 61117_5



Arm rest

Art.-no. 61211

- Incl. clamp and fixture straps
- Rotatable and tiltable by means of ball joint
- Adjustable in height and horizontally slidable
- Upholstery: Viscoelastic foam, L x W x H: 400 x 115 x 80 mm, electrically conductive, detachable
- Material: Stainless steel



Intraoperative arm positioner

Art.-no. 61216

- Incl. clamp and fixture straps
- For positioning of patient's arm in beach chair position
- Quick lock and release of joint arm by means of central screw
- Upholstery: Viscoelastic foam, L x W x H: 400 x 115 x 80 mm, electrically conductive, detachable
- Material: Stainless steel



Arm rest

Art.-no. 61217

- Incl. clamp and fixture straps
- Three joints enable flexible positioning of patient's arm
- Quick lock and release of joint arm by means of central screw
- Upholstery: Viscoelastic foam, L x W x H: 400 x 115 x 80 mm, electrically conductive, detachable
- Material: Stainless steel



Arm rest with one-hand control and comfort upholstery (Length 600 mm)

Art.-no. 61222

- Incl. clamp and fixture straps
- Rotatable by 360°, swivelling and tiltable by means of one-hand control
- Adjustable in height
- Upholstery: Viscoelastic foam, L x W x H: 600 x 165 x 60 mm, electrically conductive, detachable
- Material: Stainless steel



Arm rest with one-hand control and comfort upholstery (Length 450 mm)

Art.-no. 61223

- Incl. clamp and fixture straps
- Rotatable by 360°, swivelling and tiltable by means of one-hand control
- Adjustable in height
- Upholstery: Viscoelastic foam, L x W x H: 450 x 165 x 60 mm, electrically conductive, detachable
- Material: Stainless steel



Arm rest standard

Art.-no. 61220SF

- Incl. clamp and fixture strap
- Swivelling
- Material: Stainless steel
- Upholstery: PUR, L x W x H: 600 x 165 x 60 mm, electrically conductive
- Also available with PUR upholstery, H = 60 mm (Art.-no. 61220)

Arm positioning



Side support / arm rest

Art.-no. 61092

- For stabilisation of patient or positioning of arm
- Hinged in three steps (upwards, horizontally, downwards)
- L x H: 600 x 140 / 235 mm
- Upholstery made of artificial leathered covered foam, H= 20 mm has to be ordered separately (art.-no. 56031)



Arm shield

Art.-no. 81345

- Incl. upholstery
- L x H: 410 x 180 mm



Hand cuffs

Art.-no. 61400

- Incl. clamp
- For fixation of hands or arms
- L x W: each 180 x 80 mm
- Material: Stainless steel
- Pair





Leg rest according to Goepel

Art.-no. 61700

- For positioning patient in lithotomy position
- Upholstery: PUR, electrically conductive
- Material: Stainless steel
- Rotatable clamp (61511 or 61512) and fixture straps (B81600M1) to be ordered separately
- Piece



Leg rest according to Goepel Comfort

Art.-no. 81705

- For positioning patient in lithotomy position
- Upholstery: PUR, electrically conductive
- Material: Stainless steel
- Rotatable clamp (61511 or 61512) and fixture straps (B81600M1) to be ordered separately
- Pair



Leg rest with one-hand control

Art.-no. 61720

- Incl. upholsteries and clamps
- For positioning patient in lithotomy position
- Stepless positioning of legs
- Easy adjustment by means of gas spring supported one-hand control
- Max. patient weight: 159 kg
- Pair



Leg rest for adiposity patients

Art.-no. 61710

- Incl. upholstery and fixture strap
- Especially for the positioning of adipose patients in lithotomy position
- Tilttable by means of ball joint
- Upholstery: 300 x 285 x 155 / 100 mm, electrically conductive
- Material: Stainless steel
- Rotatable Clamp (61511 or 61512) to be ordered separately
- Pair



Elbow support

Art.-no. 61780

- Incl. clamp
- To support elbows of surgeon during procedures in lithotomy position
- L x W: 145 x 120 mm
- Upholstery: PUR, electrically conductive
- Material: Stainless steel
- Pair



Lower leg fixation

Art.-no. 61760

- Incl. clamp
- Upholstery: PUR, electrically conductive
- Material: Stainless steel
- Piece



Thigh fixation

Art.-no. 61770

- Incl. clamp
- Upholstery: PUR, electrically conductive
- Material: Stainless steel
- Piece



Rectal positioning device for medifa 5000 and 6000

Art.-no. 61632

- For positioning patient in knee-elbow position due to proctologic treatments or spinal surgery
- Adjustable in height (200 mm)
- Integrated side rails (EU)
- Safe working load: 150 kg
- Upholstery (lower): L x W x H 370 x 500 x 490 - 690 mm, electrically conductive
- Material: Stainless steel



Rectal positioning device for medifa 7000

Art.-no. 71632

- For positioning patient in knee-elbow position due to proctologic treatments or spinal surgery
- Adjustable in height (200 mm)
- Integrated side rails (EU)
- Safe working load: 150 kg
- Upholstery (lower): L x W x H 370 x 500 x 490 - 690 mm, electrically conductive
- Material: Stainless steel



Knee supports for medifa 5000 and 6000

Art.-no. 61150

- For positioning patient in knee-elbow position due to proctologic treatments or spinal surgery
- Adjustable in height and swivelling
- Upholstery: PUR, electrically conductive
- Material: Stainless steel
- Piece



Rectoscopy roll

Art.-no. 61315

- Incl. clamp
- Adjustable in height
- Upholstery: PUR, electrically conductive
- Material: Stainless steel



Knee support

Art.-no. 61630

- For positioning patient in knee-elbow position due to proctologic treatments or spinal surgery
- Incl. clamp
- Upholstery: PUR, L x W 525 x 245 mm, electrically conductive
- Material: Stainless steel

Leg positioning



Foot plates

Art.-no. 61631

- Incl. clamps
- To stabilize patient in Anti-Trendelenburg position
- For extension of lying surface (foot plates can also be hinged down)
- Upholstery: Viscoelastic foam, L x W x H each 270 x 270 x 60 mm, electrically conductive, detachable
- Material: Stainless steel
- Pair



Body and leg strap

Art.-no. 61405

- Incl. clamp
- Steplessly adjustable
- L x W: 2,300 x 80 mm
- Material: Stainless steel



Leg strap

Art.-no. 61406

- For fixation of legs at divided leg rest
- Steplessly adjustable
- Pair



Leg strap

Art.-no. 61407

- Incl. clamp
- For divided leg rests
- L: each 1,200 mm
- Safety load: 227 kg
- Pair



Standard holder

Art.-no. 661065

- For fixation of skull clamp or horseshoe headrest
- Adjustable with one hand
- Large adjustment radius
- Very low weight
- Only in connection with 61100 or 71100



Swivel adapter

Art.-no. 661067

- Connects standard holder (661065) with skull clamp (661069)
- Enables rotation adjustment of skull clamp
- Suitable for: 661065, 661069, 661076 and 661078



Skull clamp

Art.-no. 661069

- For fixation of head during neurosurgical procedures
- Locking mechanism enables quick and secure fixation
- Only in connection with 661065 and 661067
- Skull clamps (661073 and 661074) are not included in delivery!



Skull pins adults

Art.-no. 661073

- Can be sterilised, for multiple uses, three pieces, stainless steel
- Suitable for 661069



Cross bar adapter

Art.-no. 661071

- Incl. clamps
- For secure fixation of head in seated position of patient
- Adaptable to the width of operating table
- Suitable for: 661065



Horseshoe headrest for adults

Art.-no. 661076

- Incl. detachable gel pads
- For positioning of head in prone or supine position
- Only in connection with 661065 and 661067

Horseshoe headrest for children

Art.-no. 661078

- Same as 661076, but for children



Extension device for medifa 5000 and 6000
Art.-no. 63000_1

- Levitating
- Max. patient weight: levitating 136 kg , with supporting bars 250 kg
- Material: Stainless steel
- Alternatively available with viscoelastic foam upholstery, H = 80 mm (Art.-no. 63000_1SF)

Included in delivery:

- Fixation adapter for operating table incl. pelvis part with upholstery
- Countertraction post for perineum and for neck of femur
- Two swivelling extension bars with double joints
- Two swivelling and height adjustable drawing spindles with adaption for extension shoe holders
- One trolley with storage basket for additional accessories
- Two height adjustable supporting bars

Extension device for medifa 7000
Art.-no. 63000_2

- Same as 63000_1, but for medifa 7000



Coupling point for extension device 63000_2 for operating tables of series medifa 7000 without sliding

Art.-no. 63005_1

- For attachment of extension device to operating table

Coupling point for extension device 63000_2 for operating tables of series medifa 7000 with sliding

Art.-no. 63005_2

- For attachment of extension device to operating table



Extension shoe for adults

Art.-no. 61010

- For fixation of foot
- Suitable for: 63000_1, 63000_2
- Piece

Extension shoe for children

Art.-no. 61020

- Same as 61010 but for children



Countertraction post for femur for extension device 63000_1

Art.-no. 63025_1

- For extension in lateral position
- Radiolucent perinneeal arc

Countertraction post for femur for extension device 63000_2

Art.-no. 63025_2

- Same as 63025_1 but for extension device 63000_2



Countertraction post for tibia and fibula

Art.-no. 63045

- For positioning and fixation of patient during surgeries at lower leg
- Radiolucent padded roll
- Adjustable in height and inclinable
- Material: Stainless steel
- Suitable for: 63000_1, 63000_2



Pelvis plaster cast unit

Art.-no. 63030

- Usable for adults and children
- Slidable countertraction post
- Material: Stainless steel
- Suitable for: 63000_1, 63000_2



Horseshoe holder „Kirschner“

Art.-no. 63060

- For extensions using Steinmann nails
- Material: Stainless steel
- Suitable for: 63000_1, 63000_2



Leg support

Art.-no. 63026

- Incl. fixture straps
- For positioning of healthy leg during extension
- Tilttable upholstery by means of ball joint
- Upholstery: Viscoelastic foam, L x W x H: 400 x 115 x 80 mm, electrically conductive, detachable
- Material: Stainless steel
- Suitable for: 63000_1, 63000_2



Transfer leg rest

Art.-no. 63070_1

- For preoperative positioning of legs
- Incl. upholsteries, L x W x H: 600 x 200 x 35 mm, electrically conductive
- Suitable for: 63000_1
- Pair

Transfer leg rest

Art.-no. 63070_2

- Same as 63070_1, but for 63000_2



Trolley for extension device

Art.-no. 63090

- For storage and transport of extension device and accessories
- Material: Stainless steel
- Suitable for: 63000_1, 63000_2



Radiolucent extension device for medifa 6000

Art.-no. 64000

Consisting of:

- Connecting plate made of carbon fibre with outer segments which can be detached and hinged down
- Countertraction post made of carbon fibre with upholstery roll ϕ : 90 mm / H: 220 mm
- Swivelling leg rests incl. attachment for traction device with segments which can be detached and hinged down
- Traction device with rotary clamp for attachment of extension shoe
- Extension shoe (1 pc.) with mounting clamp and disposable inlay set (10 pcs.)
- Trolley for storage of extension device and accessories



Extension shoe

Art.-no. 64010

- (Additional) extension shoe for extension devices
- With mounting clamp
- For use with disposable inlay set 10 pcs. (Art.-no. 64011)



Arm extension device

Art.-no. 62050

- For intramedullary nailing of humerus
- Radiolucent countertraction post
- Incl. tension rod, countertraction post and clamp



Weinberger hand cuff

Art.-no. 62055

- Secure fixation of hand and upper arm during intramedullary nailing of humerus
- Radiolucent
- Can be sterilised



Upper arm support

Art.-no. 61226

- For positioning of upper arm
- Radiolucent
- Adjustable in height



Arm and hand surgical table levitating

Art.-no. 61231

- Incl. clamps and upholstery
- Adjustable in height and radiolucent
- Upholstery: Artificial leather covered foam, L x W x H: 600 x 340 x 35 mm, electrically conductive
- Material: Stainless steel, plastic



Arm and hand surgical table with supporting leg

Art.-no. 61232

- Incl. clamp, upholstery and supporting leg
- Height adjustment from 700 to 1,150 mm
- Table top made of radiolucent plastic, dimensions (L x W x H): 815 x 520 x 5 mm
- Upholstery: SF, H = 30 mm, electrically conductive
- Material: Stainless steel, plastic



Arm and hand surgical table made of carbon

Art.-no. 81230

- Incl. clamp, upholstery and supporting leg
- Height adjustment from 720 to 1,150 mm
- Table top made of radiolucent carbon, dimensions (L x W x H): 820 x 525 x 30 mm
- Upholstery: SF, H = 30 mm, electrically conductive
- Material: Stainless steel, Aluminium, Carbon



Meniscotomy roll

Art.-no. 61330

- Incl. clamp
- Adjustable in height
- Upholstery: PUR, electrically conductive
- Material: Stainless steel



Arthroscopic leg holder system

Art.-no. 61328

- Incl. upholstery, clamp and fixture strap
- For fixation of thigh
- Horizontally and vertically adjustable
- Width of leg holder adjustable in three steps
- Upholstery: Artificial leather covered foam, electrically conductive
- Material: Stainless steel



Knee positioning device

Art.-no. 61327

- Incl. upholstery, clamps and fixture strap
- Intraoperative flexion of knee and fixation of thigh
- Electrically adjustable by means of foot switch
- Width of leg holder adjustable in three steps
- Suitable for different leg lengths
- Tilt angle: 0° - 60°
- Upholstery: Artificial leather covered foam, electrically conductive
- Material: Stainless steel
- Power supply: 230 V / Battery: 24 V, 1.2 Ah

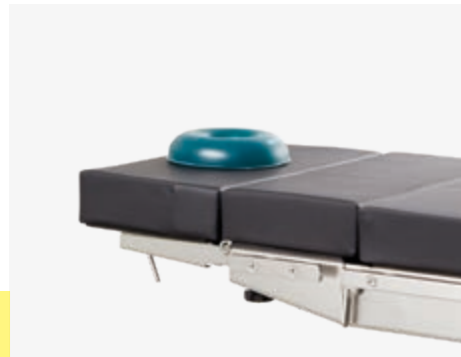
Positioning aids



Head support

Art.-no. 61147

- For positioning of patient in supine position
- Radiolucent
- L x W: 250 x 250 mm
- Material: PUR, electrically conductive



Head ring made of silicone gel for adults

Art.-no. 61115

- Height: 45 mm | diameter (outer): 200 mm

Head ring made of silicone gel for adolescents

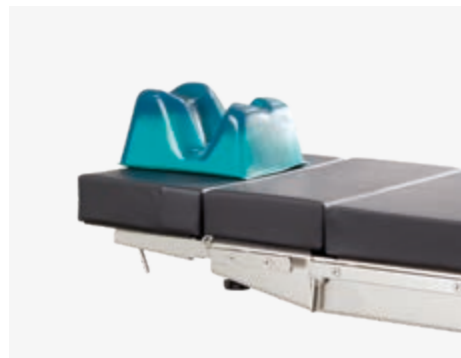
Art.-no. 61115_2

- Height: 35 mm | diameter (outer): 140 mm

Head ring made of silicone gel for infants

Art.-no. 61115_3

- Height: 20 mm | diameter (outer): 90 mm



Head positioning pad adults made of silicone gel

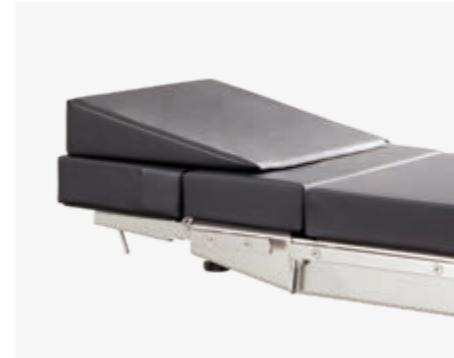
Art.-no. 61910

- For positioning of patient in prone position
- L x W x H: 280 x 240 x 150 mm

Head positioning pad children made of silicone gel

Art.-no. 61911

- For positioning of patient in prone position
- L x W x H: 260 x 230 x 140 mm



Head positioning pad

Art.-no. 61905

- For positioning of patient in supine position
- L x W x H: 400 x 500 x 100 mm
- Material: Artificial leather covered foam, electrically conductive



Lateral positioning pad

Art.-no. 61915

- For stable positioning of patient during hip, shoulder or kidney surgeries
- Cut-out to relieve pressure from shoulder joint and upper arm
- L x W x H: 700 x 500 x 160 / 25 mm
- Material: PU coated foam, electrically conductive



Spinal disc pad

Art.-no. 61900

- For positioning of patient during surgeries at spinal disc
- Radiolucent
- L x W x H: 820 x 450 x 90 mm
- Material: Viscoelastic foam, electrically conductive

Positioning aids



Flat bottom chest roll small made of silicone gel

Art.-no. 61920

- L x W x H: 305 x 100 x 75 mm

Flat bottom chest roll medium made of silicone gel

Art.-no. 61921

- L x W x H: 405 x 100 x 75 mm

Flat bottom chest roll large made of silicone gel

Art.-no. 61922

- L x W x H: 510 x 100 x 75 mm



Bottom roll adults

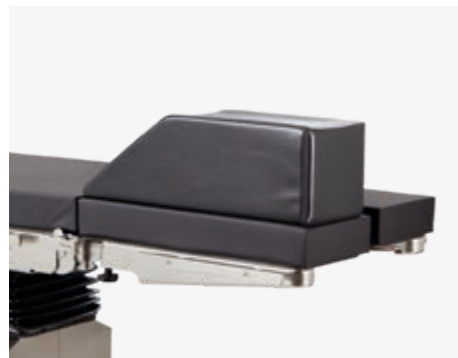
Art.-no. 61925

- For positioning of patient in supine position
- L x W x H: 500 x 220 x 110 mm
- Material: Artificial leather covered foam, electrically conductive

Bottom roll children

Art.-no. 61926

- Same as 61925, but with dimensions L x W x H: 500 x 150 x 75 mm



Foot positioning pad

Art.-no. 61930

- L x W x H: 600 x 220 x 180 mm
- Material: Artificial leather covered foam, electrically conductive



Leg positioning tunnel

Art.-no. 61935

- For positioning of patient in lateral position
- Radiolucent
- L x W x H: 600 x 390 x 220 mm
- Material: PU coated foam, electrically conductive



Heel pads made of silicone gel

Art.-no. 61940

- For positioning of patient in supine position
- L x W x H: 190 x 100 x 70 mm
- Pair

Accessories for medifa 7000



Head rest for medifa 7000

Art.-no. 71144

- Easy adjustment by means of gas spring from -45° to +45°
- Docking and undocking at back rest
- Radiolucent
- L x W: 266 x 550 mm
- Viscoelastic SF upholstery, H = 80 mm, electrically conductive, detachable



Head rest for medifa 7000

Art.-no. 71146

- Easy adjustment by means of gas spring from -45° to +45°
- Double joint enables additional tilting
- Docking and undocking at back rest
- Radiolucent
- L x W: 266 x 550 mm
- Viscoelastic SF upholstery, H = 80 mm, electrically conductive, detachable



Head-end rail

Art.-no. 71148

- Additional rail at head rest
- Length: 300 mm
- Material: Stainless steel
- Suitable for: 71144, 71146
- Piece



Side rails at head rest

Art.-no. 71149

- Additional side rails at both sides of head rest
- Length: 160 mm
- Material: Stainless steel
- Suitable for: 71144, 71146
- Pair



Upper back rest for medifa 7000

Art.-no. 71250_2

- Docking and undocking at lower back rest
- Radiolucent
- L x W: 268 x 550 mm
- Viscoelastic SF upholstery, H = 80 mm, electrically conductive, detachable
- Integrated side rails (EU)



Tripartite back rest for medifa 7000

Art.-no. 71390

- Incl. head rest
- Easy access to shoulder area by means of three detachable segments
- Docking and undocking at lower back rest
- Radiolucent
- L x W: 320 x 550 mm
- Viscoelastic SF upholsteries, H = 80 mm, electrically conductive, detachable



Pelvis section extension for medifa 7000

Art.-no. 71125_2

- Extension of pelvis section by 400 mm
- With cut-out
- Radiolucent
- L x W: 400 x 550 mm
- Viscoelastic SF upholstery, H = 80 mm, electrically conductive, detachable
- Integrated side rails (EU)



Leg rest for medifa 7000

Art.-no. 71625

- Electrically adjustable
- Docking and undocking at pelvis section
- Radiolucent
- L x W: 660 x 550 mm
- Viscoelastic SF upholstery, H = 80 mm, electrically conductive, detachable
- Integrated side rails (EU)



Divided leg rest for medifa 7000

Art.-no. 71615_2

- Electrically adjustable
- Swivelling up to 180°
- Docking and undocking at pelvis section
- Radiolucent
- L x W: each 660 x 266 mm
- Viscoelastic SF upholsteries, H = 80 mm, electrically conductive, detachable
- Integrated side rails (EU)
- Pair



Double divided leg rest for medifa 7000

Art.-no. 71660

- Electrically adjustable
- Swivelling up to 180° and bendable
- Docking and undocking at pelvis section
- Radiolucent
- L x W: each 662 x 266 mm
- Viscoelastic SF upholsteries, H = 80 mm, electrically conductive, detachable
- Integrated side rails (EU)
- Pair



Carbon positioning rest for medifa 7000

Art.-no. 71630

- Incl. upholstery
- For intraoperative x-ray, optimal radiolucency (360°)
- Docking and undocking at pelvis section or lower back rest
- L x W: 750 x 540 mm
- Viscoelastic SF upholstery, H = 70 mm, electrically conductive, detachable



Transfer leg rest for medifa 7000

Art.-no. 71635

- For short-time positioning of legs
- Docking and undocking at pelvis section
- Radiolucent
- L x W: 900 x 500 mm

Accessories for medifa 7000



Extension segments

Art.-no. 61355SF

- For extension of the operating table's lying surface
- Integrated side rails (EU)
- L x W: each 310 x 110 mm
- Viscoelastic SF upholsteries, H = 70 mm, electrically conductive, detachable
- Suitable for all operating tables with viscoelastic foam upholsteries
- Pair



Foot switch for medifa 7000

Art.-no. 704060

- Additional control unit to adjust the main functions height, lateral and Trendelenburg movement
- Tethered
- Cannot be retrofitted!



Infrared remote control for medifa 7000

Art.-no. 704070

- Wireless data transfer
- Control panel for all electrical functions of operating table
- Incl. charging station



Longitudinal sliding for medifa 7000

Art.-no. 71640

- Electromechanical longitudinal sliding of table top up to 380 mm
- Changes lowest height of operating table from 580 mm to 600 mm
- Cannot be retrofitted!



Electronic drive for medifa 7000

Art.-no. 70645

- Motorized fifth castor for manoeuvring and positioning of operating table
- Cannot be retrofitted!



Hand grips for electronic drive

Art.-no. 71570

- For manoeuvring and positioning of operating table by means of electronic drive at operating table's head end
- With integrated speed control
- Allows to move the table forwards and backwards
- Material: Stainless steel
- Suitable for: 70645

Accessories for medifa 7000



Back-up system for medifa 7000

Art.-no. 70655

- System ensures the operability of operating table's basic functions (height, lateral, Trendelenburg and brakes) in case of electronic defect by means of 24V battery
- Cannot be retrofitted!



Radiographic cassette tunnel for 700200

Art.-no. 71642_2

- To insert radiographic cassette carrier



Radiographic cassette tunnel for 700300

Art.-no. 71642_3

- To insert radiographic cassette carrier



Radiographic cassette carrier for medifa 7000

Art.-no. 71643

- To insert radiographic cassettes under table top of operating table
- With telescopic rod
- L x W x H: 470 x 385 x 16 mm
- Suitable for radiographic cassettes with dimensions 14" x 17" (US)
- Material: Stainless steel
- Suitable for: 71642_2, 71642_3

Accessories for medifa 5000 and 6000



Head rest large for medifa 5000 and 6000

Art.-no. 61144SF

- Easy adjustment by means of gas spring from -45° to +45°
- Docking and undocking at back rest
- L x W: 285 x 495 mm
- Upholstery: Viscoelastic SF upholstery, H = 80 mm, radiolucent, electrically conductive, detachable
- Also available with PUR upholstery, H= 60 mm (Art.-no. 61144)



Head rest large with double joint for medifa 5000 and 6000

Art.-no. 61146SF

- Easy adjustment by means of gas spring from -45° to +45°
- Double joint enables additional tilting
- Docking and undocking at back rest
- L x W: 285 x 495 mm
- Upholstery: Viscoelastic SF upholstery, H = 80 mm, radiolucent, electrically conductive, detachable
- Also available with PUR upholstery, H= 60 mm (Art.-no. 61146)



Upper back rest for models 601700, 601820 and 601920 (L= 360 mm)

Art.-no. 61250SF

- Docking and undocking at lower back rest
- Integrated side rails (EU)
- L x W: 360 x 540 mm
- Upholstery: Viscoelastic SF upholstery, H = 80 mm, radiolucent, electrically conductive, detachable
- Also available with PUR upholstery, H= 60 mm (Art.-no. 61250)



Upper back rest for models 601700, 601820 and 601920 (L= 250 mm)

Art.-no. 61255SF

- Docking and undocking at lower back rest
- Integrated side rails (EU)
- L x W: 250 x 540 mm
- Upholstery: Viscoelastic SF upholstery, H = 80 mm, radiolucent, electrically conductive, detachable



Kidney bridge for medifa 5000 and model 601120

Art.-no. 61655SF

- Manually adjustable by hand crank
- Upholstery: Viscoelastic SF upholstery, H = 80 mm, radiolucent, electrically conductive, detachable
- Also available with PUR upholstery, H= 60 mm (Art.-no. 61655)
- Cannot be retrofitted!



Tripartite back rest for medifa 5000 and model 601120

Art.-no. 61385SF

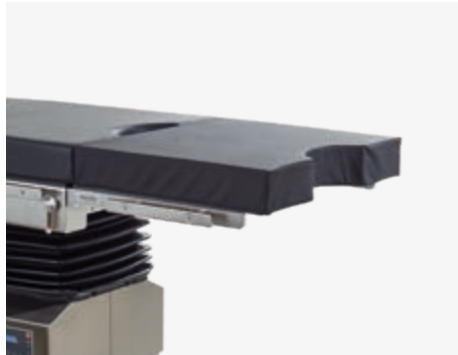
- Incl. head rest
- Easy access to shoulder area by means of three detachable segments
- Docking and undocking at pelvis section (Reverse-Mode)
- Easy adjustment by means of gas spring
- L x W: each segment 315 x 170 mm
- Upholstery: Viscoelastic SF upholstery, H = 80 mm, radiolucent, electrically conductive, detachable
- Also available with PUR upholstery, H= 60 mm (Art.-no. 61385)



Tripartite back rest for models 601700, 601820 and 601920

Art.-no. 61390SF

- Incl. head rest
- Easy access to shoulder area by means of three detachable segments
- Docking and undocking at lower back rest
- L x W: each segment 315 x 170 mm
- Upholstery: Viscoelastic SF upholstery, H = 80 mm, radiolucent, electrically conductive, detachable
- Also available with PUR upholstery, H= 60 mm (Art.-no. 61390)



Pelvis section extension for medifa 5000 and 6000 (L= 430 mm)

Art.-no. 61125SF

- Extension of pelvis section by 430 mm
- With cut-out
- Integrated side rails (EU)
- L x W: 430 x 540 mm
- Upholstery: Viscoelastic SF upholstery, H = 80 mm, radiolucent, electrically conductive, detachable
- Also available with PUR upholstery, H= 60 mm (Art.-no. 61125)



Pelvis section extension for medifa 5000 and 6000 (L= 250 mm)

Art.-no. 61130SF

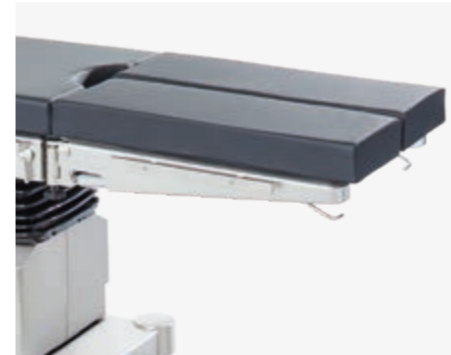
- Extension of pelvis section by 250 mm
- With cut-out
- Integrated side rails (EU)
- L x W: 250 x 540 mm
- Upholstery: Viscoelastic SF upholstery, H = 80 mm, radiolucent, electrically conductive, detachable



Leg rest for medifa 5000 and models 601120, 601700, 601820

Art.-no. 61625SF

- Adjustment by means of gas spring from -90° up to +30°
- Docking and undocking at pelvis section
- Integrated side rails (EU)
- L x W: 670 x 540 mm
- Upholstery: Viscoelastic SF upholstery, H = 80 mm, radiolucent, electrically conductive, detachable
- Also available with PUR upholstery, H= 60 mm (Art.-no. 61625)



Divided leg rest for medifa 5000 and models 601120, 601700, 601820

Art.-no. 61615SF

- Adjustment by means of gas spring from -90° up to +30°, swivelling up to 180°
- Docking and undocking at pelvis section
- Integrated side rails (EU)
- L x W: each 730 x 250 mm
- Upholstery: Viscoelastic SF upholstery, H = 80 mm, radiolucent, electrically conductive, detachable
- Also available with PUR upholstery, H= 60 mm (Art.-no. 61615)

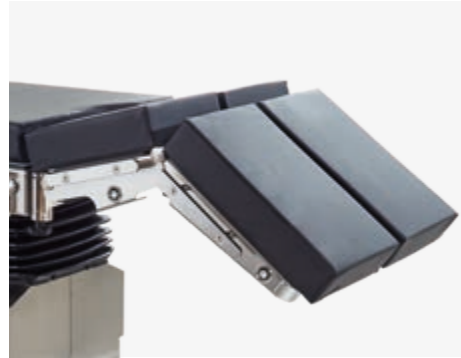


Divided leg rest for model 601920

Art.-no. 61616SF

- Electrohydraulic adjustment from -90° up to +75°, swivelling up to 180°
- Docking and undocking at pelvis section
- Integrated side rails (EU)
- L x W: each 610 x 250 mm
- Upholstery: Viscoelastic SF upholstery, H = 80 mm, radiolucent, electrically conductive, detachable

Accessories for medifa 5000 and 6000



Double divided leg rest for medifa 5000 and models 601120, 601700, 601820

Art.-no. 61660SF

- Adjustment by means of gas spring from +30° up to -90°, swivelling up to 180°, bendable
- Docking and undocking at pelvis section
- Integrated side rails (EU)
- L x W: each 720 x 250 mm
- Upholstery: Viscoelastic SF upholstery, H = 80 mm, radiolucent, electrically conductive, detachable
- Also available with PUR upholstery, H= 60 mm (Art.-no. 61660)



Carbon positioning rest for medifa 5000 and 6000

Art.-no. 61690

- Incl. upholstery
- For intraoperative x-ray, optimal radiolucency (360°)
- Docking and undocking at pelvis section or lower back rest
- L x W: 750 x 540 mm
- Upholstery: SF, H = 45 mm, radiolucent, electrically conductive



Transfer leg rest for medifa 5000 and 6000

Art.-no. 61635

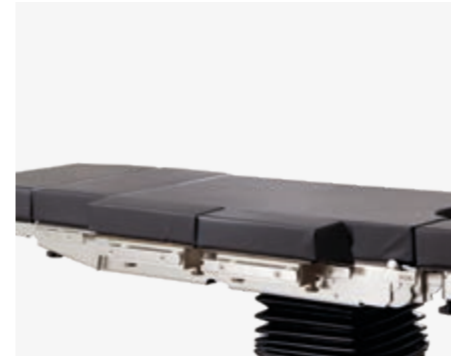
- For short-time positioning of legs
- Docking and undocking at pelvis section
- L x W: 900 x 500 mm



Paediatric surgery rest for medifa 5000 and 6000

Art.-no. 61633

- Docking and undocking at pelvis section
- Integrated side rails (EU)
- L x W: 700 x 430 mm
- Upholstery: Viscoelastic foam, H = 60 mm, electrically conductive



Extension segments medifa 5000, 6000 and 7000

Art.-no. 61355SF

- Segments for extension of operating table's lying surface
- Integrated side rails (EU)
- L x W: each segment 310 x 105 mm
- Upholstery: Viscoelastic SF upholstery, H = 70 mm, radiolucent, electrically conductive, detachable
- Also available with PUR upholstery, H= 60 mm (Art.-no. 61355)
- Pair



Foot switch for medifa 5000 and 6000

Art.-no. 604060

- Additional control unit to adjust the main functions height, lateral and Trendelenburg movement
- Tethered
- Cannot be retrofitted!

Accessories for medifa 5000 and 6000



Infrared remote control for medifa 5000 and 6000

Art.-no. 604070

- Wireless data transfer
- Control panel for all electric functions of operating table
- Incl. charging station



Manual back-up system for medifa 6000

Art.-no. 50655

- Secures the functionality of operating table in case of an electronic defect or breakdown of power supply
- Override of electronic functions by means of manual foot pedal
- Cannot be retrofitted!



Stabilization cylinder for medifa 6000

Art.-no. 50650

- Extendible
- For optimal stability of operating table
- Cannot be retrofitted!



Connecting bar for medifa 5000 and 6000

Art.-no. 61670

- Exchange of stainless steel connecting bar at back rest with a radiolucent connecting bar made of special plastic
- Improves radiolucency of back rest



Radiographic cassette carrier for medifa 5000 and 6000

Art.-no. 61640

- To insert radiographic cassettes under table top of operating table
- With telescopic rod
- L x W x H: 470 x 385 x 16 mm
- Suitable for radiographic cassettes with dimensions 14" x 17" (US)
- Material: Stainless steel



Rinsing set for medifa 5000 and 6000

Art.-no. 61120

- Incl. bucket, basin, strainer, tube, undercarriage and fixation
- Docking and undocking at pelvis section
- L x W x H (Basin): 325 x 265 x 65 mm
- Volume (Bucket): 15 litre
- Material: Stainless steel

Accessories for medifa 5000 BASIC



Head rest for medifa 5000 BASIC

Art.-no. 61148

- Easy adjustment by means of gas spring from -45° up to +45°
- Docking and undocking at back rest
- Radiolucent
- L x W: 290 x 500 mm
- Upholstery: PUR, H = 40 mm, electrically conductive, detachable



Horseshoe shaped head rest for medifa 5000 BASIC

Art.-no. 61149

- One-piece
- Adjustable by ball joint
- Upholstery: PUR, electrically conductive



Divided leg rest for medifa 5000 BASIC

Art.-no. 61618

- Easy adjustment by means of gas spring from +20° up to -90°, swivelling up to 180°
- Docking and undocking at pelvis section
- Radiolucent
- L x W: each 660 x 250 mm
- Upholstery: PUR, H = 40 mm, electrically conductive, detachable
- Pair



Leg rest one-piece for medifa 5000 BASIC

Art.-no. 61628

- Easy adjustment by means of gas spring +20° up to -90°
- Docking and undocking at pelvis section
- Radiolucent
- L x W: 620 x 540 mm
- Upholstery: PUR, H = 40 mm, electrically conductive, detachable



Carrier for transport ventilation

Art.-no. 61091

- For transport ventilation „Oxylog“



Carrier oxygen bottles

Art.-no. 61090

- For oxygen bottles (2-3 l)

Accessories for medifa 5000 BASIC



Filing basket for medifa 5000 BASIC

Art.-no. 61093

- For attachment at the base of operating table
- Incl. fixation
- Material: Stainless steel



Floor levelling feet for medifa 5000 BASIC

Art.-no. 61094

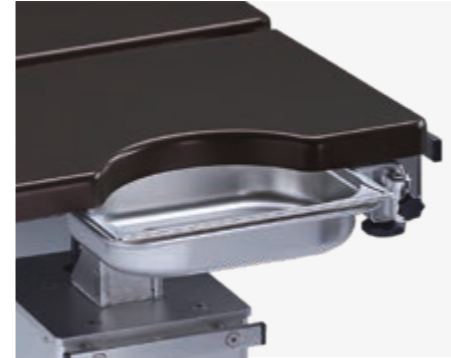
- Ensures optimal stability of operating table on uneven floors by means of height adjustable levelling feet (4 pieces)
- Cannot be retrofitted!
- Material: Stainless steel



Radiographic cassette carrier for medifa 5000 BASIC

Art.-no. 61645

- To insert radiographic cassettes under table top of operating table
- With telescopic rod
- L x W x H: 485 x 410 x 16 mm
- Suitable for radiographic cassettes with dimensions 14" x 17" (US)
- Material: Stainless steel



Instrument disposal made of stainless steel for medifa 5000 BASIC

Art.-no. 61088

- Swivelling
- L x W x H: 325 x 265 x 65 mm



Bowl made of stainless steel with drainage and tube for medifa 5000 BASIC

Art.-no. 61089

- Swivelling
- L x W x H: 325 x 265 x 65 mm

Transport box for medifa 5000 BASIC

Art.-no. 61095

- For safe transport of operating table
- L x W x H: 1,200 x 800 x 952 mm
- Material: Aluminium

Available upon request!

Accessory trolley



Accessory trolley

Art.-no. 341045

- For central storage of accessories
- Five slots for storage of upholstery segments
- Five side rails (25 x 10 mm) for storage of further accessories
- One shelf for storage of small accessories
- L x W x H: 765 x 700 x 1670 mm
- Four double swivel castors (two with brake)
- Material: Stainless steel

medifa

The medifa healthcare group unites competence concerning operating rooms under one roof.

medifa is an owner-run and internationally active complete solution provider in the medical technology.

The product and service portfolio covers all operating room requirements from modular wall, door, ceiling and cabinet systems (RooSy® Room Systems) for the turnkey operating room, as well as mobile operating tables, operating table accessories and operating lights, right up to examination chairs and medical

furniture. In addition, one of the largest German OEM suppliers in the medical technology sector also belongs to medifa.

medifa GmbH & Co. KG (Finnentrop), medifa hygienic rooms GmbH (Ötigheim) and medifa metall und medizintechnik GmbH in Rastatt are all part of this group of companies. The medifa healthcare group employs approximately 350 employees at three locations within Germany. The planning, engineering and production

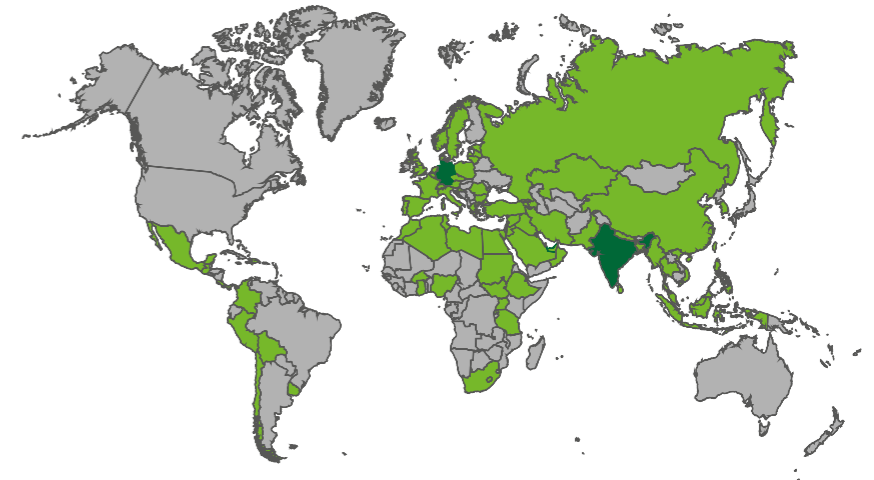
take place exclusively in Germany, and with over 90% added value in the group of companies, the group guarantees fast reaction times.

The slogan “we care” means for us that we consistently orientate ourselves according to the requirements of our customers. Customers all over the world can rely on top-class consultation, processing and quality from a single source, made in Germany according to certified national and international quality standards.

Products

- Modular operating room systems: walls, doors, ceilings and cabinets (RooSy)
- Mobile operating tables and accessories
- Operating lights
- Examination and treatment chairs
- Medical furniture and trolleys
- Customized medical solutions

medifa worldwide





Version 10-20-EN

Subject to modifications due to technical development.
This document is intended to provide information to an
international audience outside of the US.

www.medifa.com

we care. Code



medifa GmbH & Co. KG

Industriestraße 5
57413 Finnentrop

Germany

fon +49 2721 71 77 -0

fax +49 2721 71 77 -255

info@medifa.com

we care.